

Tennessee Beef Cattle Improvement Initiative



Can You Afford To Wean and Feed Your Calves? Dyer County Demonstration

“It doesn’t pay to wean my calves before selling them.” Ever heard someone say that? Ever said that yourself? Most beef producers in our state believe they will not make money by weaning their calves and feeding them for a period before time to sell. A demonstration was conducted in Dyer County to show that it can pay to wean your calves and feed them for 45 days prior to selling.



Demonstration Program

- Wean calves 45 days - October 7, 2002
- Vaccination Program
 - CattleMaster 4 - 2 shots
 - Ultrabac 7 - Somubac - 2 shots
 - One Shot - Pasteurella
 - Vibrio - Lepto 5 - 2 shots
- Dewormed using Dectomax
- Calves fed approximately 1% of body weight for 45 days
- Estimate value at beginning and end of demonstration

The vaccination and deworming protocol are based on the Southeast Pride Plus Sale.

Cost of Health and Feeding Program

Health Program

1 st Vaccination	
Ultrabac 7 - Somubac	\$ 0.67
CattleMaster 4	\$ 2.31
One Shot - Pasteurella	\$ 1.95
Vibrio - Lepto	\$ 0.69
Dectomax Pour-on	\$ 3.65

2nd Vaccination

Ultrabac 7 - Somubac	\$ 0.67
CattleMaster 4	\$ 2.31
Vibrio - Lepto	\$ 0.69

Total Cost of Health Program \$12.94

Feeding Program - 45 days

225 lbs Co-Op feed @ \$9.70 per cwt.	\$ 21.83
600 lbs hay @ \$25 per 1500 lb bale	\$ 10.00
70 lbs hay @ \$2.00 per 50 lb bale	\$ 2.80

Total Cost of Feeding Program \$34.63

Total Cost of

Health and Feeding Program \$61.93



Cattle Performance

Date	Average Weight	Average Gain (lbs/head)	Average Daily Gain
10-07-02	477		
10-28-02	535	58	2.77
11-21-02	572	37	1.52 ¹
Total		95	2.10

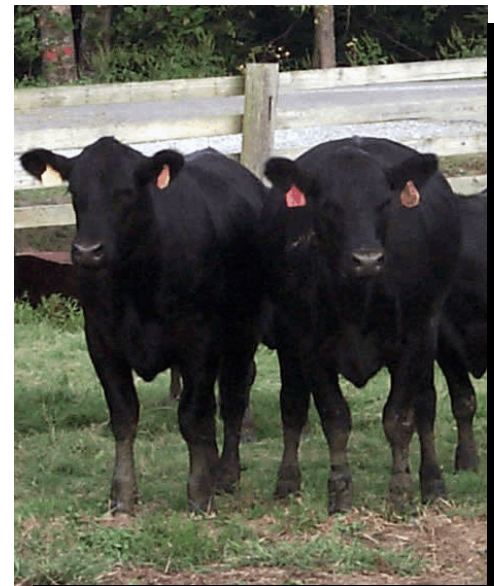
¹Decrease in gain due to change in quality of hay fed.

Net Added Value

Average value Oct. 7 ¹	Average value Nov. 21 ¹	Difference (\$/head)	Cost of Program ²	Net Added Value
347.06	418.49	71.43	47.57	23.86

¹Based on USDA Market News Tennessee Weekly Auction Summary

²Feed and pharmaceuticals



Take Home Message

- Cattle will gain enough in a post weaning program to pay for feed and health program
- A good marketing program is needed to capture the value which has been added to the cattle
- For producers with less than a 50,000 lb load, the graded feeder sale is the best alternative

Sponsors

- Pfizer Animal Products
- Tennessee Farmers Cooperative
- Dyer Farmers Cooperatives
- UT Agricultural Extension Service

Use of trade or brand name in this publication is for clarity and information; it does not imply approval of the product to the exclusion of others which may be similar, suitable composition, nor does it guarantee or warrant the product.

For more information about the Initiative, contact Emmit Rawls, 865-974-7271 elrawls@utk.edu.
UT is an EEO/AA/TitleVI/Title IX/Section 504/ADA/ADEA Institution.
E12-4115-00-001-03